

VANITY QUICK REFERENCE

VANITY BASE PART NUMBER KEY

Example (60" Grey Savino Vanity with No Top):

VN2SAV-60-GR-NT

designates 2nd generation vanity

designates the vanity collection

designates the width of the vanity in inches

designates the vanity finish

designates a vanity with no top

VANITY TOP PART NUMBER KEY

Example (49" Calacatta Black Quartz Top with Rectangle Bowl Cutout):

TOPR49BQ

designates part number is a vanity top

designates Rectangle (R) or Oval (O) bowl cutout

designates number to match the vanity width +1" (48" vanity + 1" = 49); tops create a 1/2" overhand on either side of the vanity

designates top material

VANITY BOWLS

VN2-OVAL-15

For all sizes of tops with an oval cutout.

VN2-RECT-16

For 25" tops with a rectangle cutout.

VN2-RECT-19

For 31", 37", 49", and 61" tops with a rectangle cutout.

MIRROR PART NUMBER KEY

Example (22" White Cade Mirror):

MIR2CAD-22-WH

designates 2nd generation vanity mirror

designates the primary coordinating vanity collection

designates the width of the mirror in inches

designates the mirror finish

SIDESPLASH PART NUMBER KEY

Example (21" Steel Grey Sidesplash):

SSPLASH21BQ

designates part number is a sidesplash

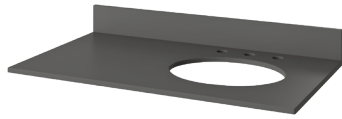
Each sidesplash is 21" long and is universal for left or right side application

designates top material

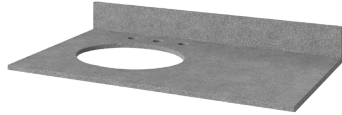
CODE ABBREVIATIONS

COLLECTIONS		VANITY WIDTHS		TOP WIDTHS		VANITY FINISHES		TOP MATERIAL	
ADD	Addington	18	18" vanity	25	25" top	BK	Black	AS	Arctic Stone
ADL	Adler	24	24" vanity	31	31" top	BL	Hale Blue	BG	Black Granite
AST	Astoria	30	30" vanity	37	37" top	CH	Chocolate	BO	Boulder
CAD	Cade	36	36" vanity	49	49" top	ES	Espresso	BQ	Calacatta Black Quartz
CHA	Chatham	48	48" vanity	61	61" top (double bowl)	GN	Forest Green	CQ	Calacatta Vienna Quartz
CLA	Clairemont	60	60" vanity	61S	61" top (single bowl)	GR	Grey	GQ	Grey Quartz
COM	Compton					NU	Nutmeg	LA	Lavante
DOU	Douglas					WA	Walnut	LS	Blue Limestone
JEN	Jensen					WH	White	MG	Grey Marble
SAV	Savino							SG	Steel Grey
WAV	Wavecrest							WC	White Carrara Marble

SPECIAL TOP CONFIGURATIONS



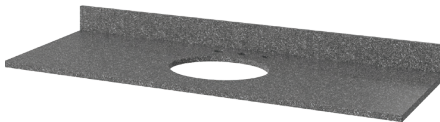
36" Astoria – has a right offset bowl, so a special top is required. "AST" is added to the part number to designate this configuration. **Example: TOPO37GQAST**



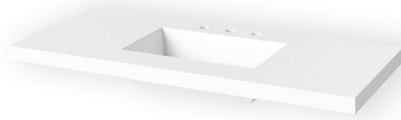
36" Cade and 36" Addington – have a left offset bowl, so a special top is required. "CAD-ADD" is added to the part number to designate this configuration. **Example: TOPR37SGCAD-ADD**



Clairemont and Compton Vanities – These tops are designated with either CLA for the Clairemont tops, or COM for the Compton tops at the end of the top item number. **Examples: TOPO31WCCLA / TOPR61BGCOM**



60" Single Bowl – Used with the 60" single bowl vanity (Chatham collection). "61S" is added to the part number to designate this configuration. **Example: TOPO61SBO**



LA - Lavante – This top comes with an integrated rectangle bowl and no backsplash. No bowl addition is required. **Example: TOPR37LA**

CODE ABBREVIATIONS

COLLECTIONS		VANITY WIDTHS		TOP WIDTHS		VANITY FINISHES		TOP MATERIAL	
ADD	Addington	18	18" vanity	25	25" top	BK	Black	AS	Arctic Stone
ADL	Adler	24	24" vanity	31	31" top	BL	Hale Blue	BG	Black Granite
AST	Astoria	30	30" vanity	37	37" top	CH	Chocolate	BO	Boulder
CAD	Cade	36	36" vanity	49	49" top	ES	Espresso	BQ	Calacatta Black Quartz
CHA	Chatham	48	48" vanity	61	61" top (double bowl)	GN	Forest Green	CQ	Calacatta Vienna Quartz
CLA	Clairemont	60	60" vanity	61S	61" top (single bowl)	GR	Grey	GQ	Grey Quartz
COM	Compton					NU	Nutmeg	LA	Lavante
DOU	Douglas					WA	Walnut	LS	Blue Limestone
JEN	Jensen					WH	White	MG	Grey Marble
SAV	Savino							SG	Steel Grey
WAV	Wavecrest							WC	White Carrara Marble